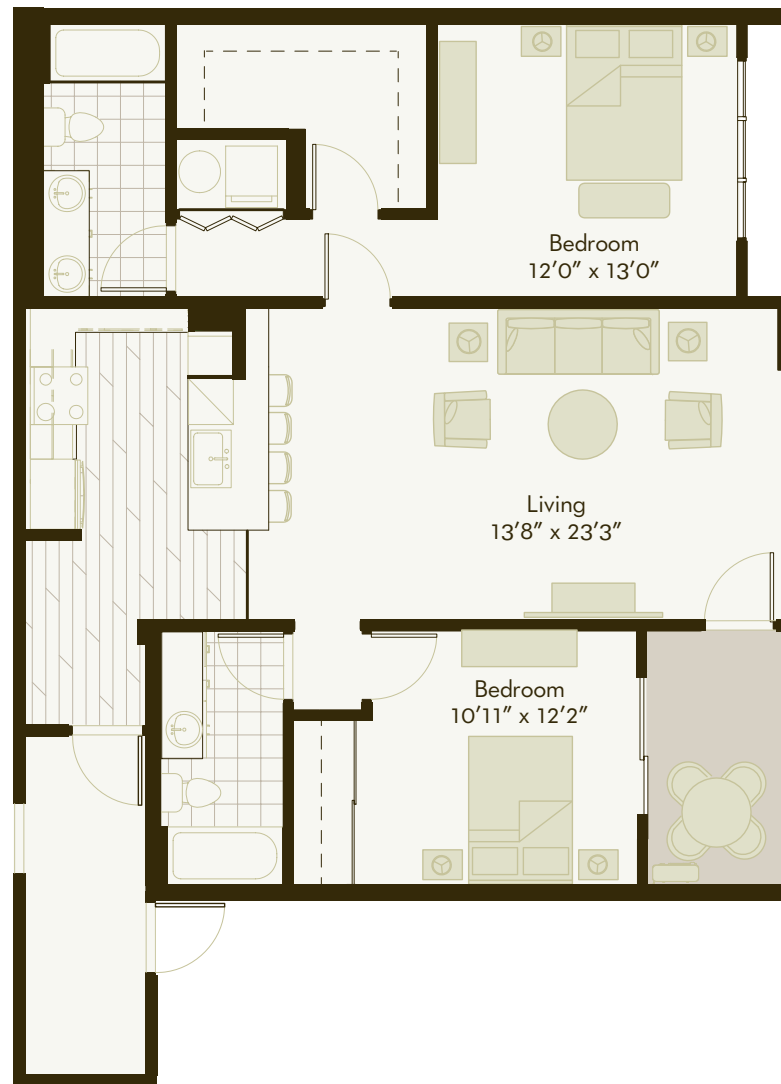


TOWNHOME FLOORPLAN



UNIT TYPE: 4A (FL 2-3)



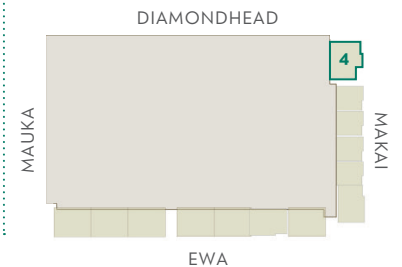
2 BEDROOM / 2 BATH

LIVING AREA: 1,173 sf

LANAI: 70 sf

TOTAL SF: 1,243

FLOOR MAP



SALES OFFICE: Waterfront Plaza | 500 Ala Moana Blvd. 3-A, Honolulu, Hawai'i 96813 | 808 439 8300 | www.keauhoupplace.com

This is an artist's depiction of the Developer's current proposed development concepts for the Project, which concepts continue to evolve and are subject to change without notice. All dimensions and square footage calculations are approximate. Furnishings are represented for illustration purposes only. Units are not furnished. Access to amenities may be subject to the payment of fees, membership requirements and other restrictions. Developer does not own or control the land outside the Project and does not guarantee the current or future use thereof. These materials shall not constitute an offer in any state where prior registration is required. Void where prohibited by law.